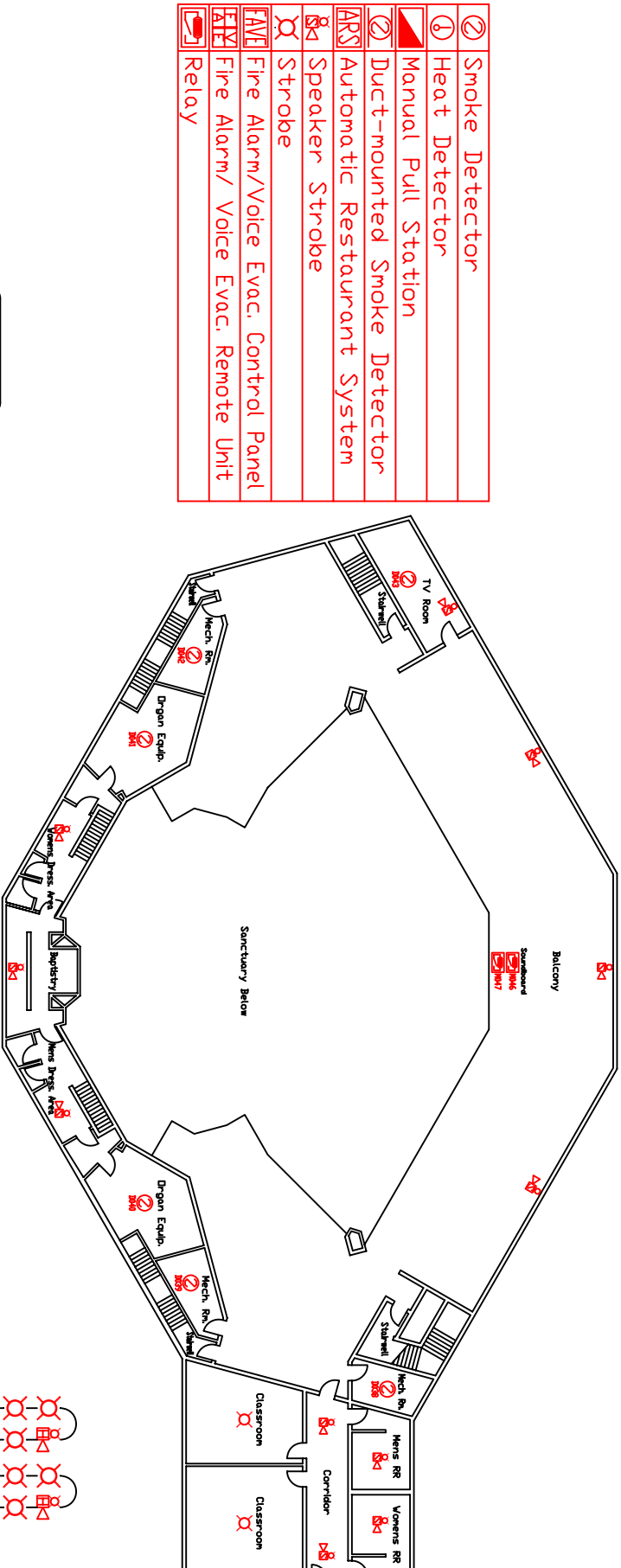
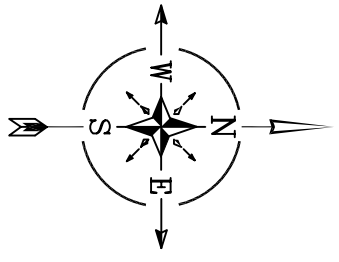
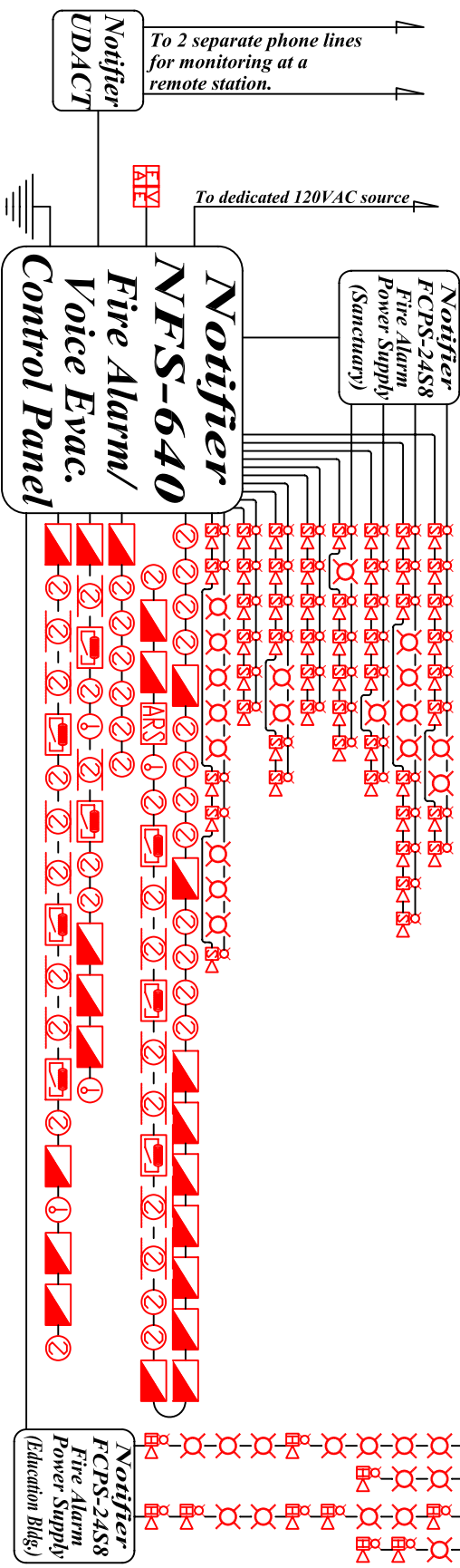


1st Floor



2nd Floor

- ② Smoke Detector
- ① Heat Detector
- ▶ Manual Pull Station
- ② Duct-mounted Smoke Detector
- ARS Automatic Restaurant System
- BS Speaker Strobe
- FS Strobe
- FAVE Fire Alarm/Voice Evac. Control Panel
- FAVE Fire Alarm/ Voice Evac. Remote Unit
- Relay



Notes:

- Fire alarm will be an addressable type system installed so that each device will announce its own location at the fire alarm panel.
- The use of ceiling mounted notification devices is allowed in lieu of wall mounted, and vice-versa, when it is advantageous for installation/service and/or aesthetic purposes; so long as the occupant notification coverage is not compromised.
- Wiring will be installed as per Chapter 760 of the NEC.
- Free hanging of FPL and equivalents is permitted as allowed by NEC.
- Duct detectors will be installed on HVAC units greater than 2000cfm (Ston).
- Each duct detector will sound only a "supervisory"-type signal, no general alarm activation or fire department dispatch will occur from this action. Also, each duct detector will only shutdown its respective air handler, as allowed per NFPA 90A.
- Each duct detector will announce its own location at the main fire alarm panel and its remote annunciators, therefore not requiring individual remote annunciators.
- The accompanying riser is only meant to be representative of how circuitry should be run, if during installation it is advantageous to install circuits differently it is allowed, so long as "as-builts" are provided at time of final testing and equipment capacities and limitations are not exceeded.

As-Built Fire Alarm Plan For: Church Demo	
Scale: 3/32" = 1'0"	Revised: 07-30-2008
Date: 06-11-2008	Drawn By: WJH



401 N. Scenic Hwy
Lake Wales, FL 33853
863-678-0678 800-446-2345
Lic#EF0001006

Engineers
Seal
Name

Page:
1

FA-1